

TECHNICAL SPECIFICATIONS

Quality	: APP-200
Yarn Fiber	: 100% Polypropylene (PP) Solution Dyed
Gauge and Structure	: 1/12" Multi-Level Loop Machine Tufted
Size	: 50cm x 50cm
Packing	: 20pcs./box (5m ²)
Pile Weight	: ± 20oz./yd ² (680g/m ²)
Total Weight	: ± 4,800g./m ²
Pile Height	: ± 3.5 / 4.0 / 4.5mm
Total Height	: ± 7.5mm
Primary Backing	: 100% Spun Bonded Polyester (Non-Woven)
Secondary Backing	: PVC with Glass Fiber
Critical Radiant Flux	: ASTM E648-2019 / NFPA 101-2018
Smoke Density	: ASTM E662-2018
Fire Classification	: EN 13501-1 : 2007+A1:2009 B _{fl}
Colorfastness	: AATCC TM 165-2013
Tuft Bind of Pile	: ASTM D 1335-17E1
Environmental Cert.	: C R I Green Label Plus GLP100054
Quality Management	: ISO-9001:2000 / ISO-14001:2004

Test Report

No. AJFS2009008018FF

Date: OCT.16, 2020 Page 2 of 4

I. Test conducted

This test was conducted in accordance with **ASTM E 648-2019** Standard test method for critical radiant flux of floor-covering systems using a radiant heat energy source.

II. Sample details

Sample description	Carpet Tile
Color	Multi
Exposed surface	The front surface
Specimen size	Length: <u>1050</u> mm; Width: <u>250</u> mm; Thickness: <u>5.5</u> mm 3 PCS
Precondition	Temperature: 21±3℃, Humidity: 50±5%, Duration: 9 days

III. Test results

Distance (mm)	S1	S2	S3
	Time (minute: second)	Time (minute: second)	Time (minute: second)
50	5:48	6:01	5:51
100	9:23	10:12	10:26
150	-	-	-
200	-	-	-
250	-	-	-
300	-	-	-
350	-	-	-
400	-	-	-
450	-	-	-
500	-	-	-
550	-	-	-
600	-	-	-
650	-	-	-
700	-	-	-
750	-	-	-
800	-	-	-
850	-	-	-
900	-	-	-
950	-	-	-
1000	-	-	-
1050	-	-	-
Extinguishing time	13:16	14:19	12:43
Burned distance (mm)	120	130	120

To be continued...



Unless otherwise agreed in writing, this document is issued by the Company subject to its General Conditions of Service printed overleaf, available on request or accessible at <http://www.sgs.com/en/Terms-and-Conditions.aspx> and, for electronic format documents, subject to Terms and Conditions for Electronic Documents at <http://www.sgs.com/en/Terms-and-Conditions/Document.aspx>. Attention is drawn to the limitation of liability, indemnification and jurisdiction issues defined therein. Any holder of this document is advised that information contained hereon reflects the Company's findings at the time of its intervention only and within the limits of Client's instructions, if any. The Company's sole responsibility is to its Client and this document does not exonerate parties to a transaction from exercising all their rights and obligations under the transaction documents. This document cannot be reproduced except in full, without prior written approval of the Company. Any unauthorized alteration, forgery or falsification of the content or appearance of this document is unlawful and offenders may be prosecuted to the fullest extent of the law. Unless otherwise stated the results shown in this test report refer only to the sample(s) tested and such sample(s) are retained for 30 days only.

Attention: To check the authenticity of testing / inspection report & certificate, please contact us at telephone: (86-755) 8397 1443, or email: CN.Doccheck@sgs.com
 No. 301, Sunlight Road, 2 Block, Sunlight Industry Zone, Anji County, Zhejiang Province, China 313300 t (86-572) 5018825 f (86-572) 5018822 www.sgs.com.cn
 中国·浙江·安吉县阳光工业园二区阳光大道301号 邮编:313300 t (86-572) 5018825 f (86-572) 5018822 e sgs.china@sgs.com

	S1	S2	S3	Average	S	V
Critical radiant flux (W/cm ²)	1.1	1.1	1.1	1.1	0	0

Remark:

S—standard deviation; V—coefficient of variation

Classification: NFPA 101-2018 Life Safety Code Chapter 10 Interior Finish, Contents, and Furnishings Clause 10.2.7.4 Interior Floor Finish Test and Classification,

(1) Class I interior floor finish shall be characterized by a critical radiant flux not less than 0.45 W/cm².

(2) Class II interior floor finish shall be characterized by a critical radiant flux not less than 0.22 W/cm² but less than 0.45 W/cm².

Since the tested sample received an average Critical radiant flux 1.1 W/cm², it meets the requirements of Class I for interior floor finish specified in NFPA 101-2018 clause 10.2.7.4.

STATEMENTS:

This declaration of conformity is only based on the result of this laboratory activity, the impact of the uncertainty of the results was not included.

The test results relate to the behaviour of the test specimens of a product under the particular conditions of the test. They are not intended to be the sole criterion for assessing the potential fire hazard of the product in use.

The test results relate only to the specimens of the product in the form in which were tested. Small differences in the composition or thickness of the product may significantly affect the performance during the test and may therefore invalidate the test results. Care should be taken to ensure that any product, which is supplied or used, is fully represented by the specimens, which were tested.

To be continued....



Unless otherwise agreed in writing, this document is issued by the Company subject to its General Conditions of Service printed overleaf, available on request or accessible at <http://www.sgs.com/en/Terms-and-Conditions.aspx> and, for electronic format documents, subject to Terms and Conditions for Electronic Documents at <http://www.sgs.com/en/Terms-and-Conditions/Terms-e-Documents.aspx>. Attention is drawn to the limitation of liability, indemnification and jurisdiction issues defined therein. Any holder of this document is advised that information contained hereon reflects the Company's findings at the time of its intervention only and within the limits of Client's instructions, if any. The Company's sole responsibility is to its Client and this document does not exonerate parties to a transaction from exercising all their rights and obligations under the transaction documents. This document cannot be reproduced except in full, without prior written approval of the Company. Any unauthorized alteration, forgery or falsification of the content or appearance of this document is unlawful and offenders may be prosecuted to the fullest extent of the law. Unless otherwise stated the results shown in this test report refer only to the sample(s) tested and such sample(s) are retained for 30 days only.

Attention: To check the authenticity of testing / inspection report & certificate, please contact us at telephone: (86-755) 8397 1443, or email: CN.Doccheck@sgs.com

No. 301, Sunlight Road, 2 Block, Sunlight Industry Zone, Anji County, Zhejiang Province, China 313300 t (86-572) 5018825 f (86-572) 5018829 www.sgs.com.cn
 中国·浙江·安吉县阳光工业园二区阳光大道301号 邮编:313300 t (86-572) 5018825 f (86-572) 5018829 e sgs.china@sgs.com

I. Test conducted

This test was conducted according to **ASTM E662-2018** Standard Test Method for Specific Optical Density of Smoke Generated by Solid Materials.

II. Sample details

Sample description	Carpet Tile
Color	One side multi; One side grey
Thickness	About 6.0mm
Dimensions	About 76mm×76mm
Number of test sample	6 PCS
Exposed surface	The front face

III. Test details

Condition prior to testing: Prior to testing, the submitted sample was dried for 48 h at 60±3°C and then 23±3°C and RH 50±5% till constant weight
 Irradiance Exposure: 2.50+/-0.05 W/cm²

IV. Test results

1) Flaming mode

	Test Specimen			Flaming dripping or flaming running	Average
	#1	#2	#3		
Temperature of chamber wall (°C)	36	35	36	NO	
$D_{S1.5}$	0.5	0	0.3		0.3
$D_{S4.0}$	142.9	85.6	91.7		106.7
D_m	176.3	106.9	117.2		133.5
t_{D_n} (min)	11.0	11.0	12.1		
$Dm(corr)$	163.7	103.4	104.9		124.0
Observations	Color of the smoke: Black				

To be continued...



Unless otherwise agreed in writing, this document is issued by the Company subject to its General Conditions of Service printed overleaf, available on request or accessible at <http://www.sgs.com/en/Terms-and-Conditions.aspx> and, for electronic format documents, subject to Terms and Conditions for Electronic Documents at <http://www.sgs.com/en/Terms-and-Conditions/Terms-e-Documents.aspx>. Attention is drawn to the limitation of liability, indemnification and jurisdiction issues defined therein. Any holder of this document is advised that information contained hereon reflects the Company's findings at the time of its intervention only and within the limits of Client's instructions, if any. The Company's sole responsibility is to its Client and this document does not exonerate parties to a transaction from exercising all their rights and obligations under the transaction documents. This document cannot be reproduced except in full, without prior written approval of the Company. Any unauthorized alteration, forgery or falsification of the content or appearance of this document is unlawful and offenders may be prosecuted to the fullest extent of the law. Unless otherwise stated the results shown in this test report refer only to the sample(s) tested and such sample(s) are retained for 30 days only.

Attention: To check the authenticity of testing / inspection report & certificate, please contact us at telephone: (86-755) 8397 1443, or email: CN.Doccheck@sgs.com
 No. 301, Sunlight Road, 2 Block, Sunlight Industry Zone, Anji County, Zhejiang Province, China 313300 t (86-572) 5018825 f (86-572) 5018829 www.sgs.com.cn
 中国·浙江·安吉县阳光工业园二区阳光大道301号 邮编: 313300 t (86-572) 5018825 f (86-572) 5018829 e sgs.china@sgs.com

2) Non - Flaming mode

	Test Specimen			Flaming dripping or flaming running	Average
	#1	#2	#3		
Temperature of chamber wall (°C)	36	36	36	NO	
$D_{S1.5}$	0	0	0		0
$D_{S4.0}$	28.9	30.6	31.2		30.2
D_m	441.8	467.5	456.9		455.4
t_{D_m} (min)	17.5	16.7	16.2		
$D_m(\text{corr})$	441.8	467.5	456.9		455.4
Observations	Color of the smoke: Black				

Note:

$D_{S1.5}$ — Specific optical density at 1.5 minutes;

$D_{S4.0}$ — Specific optical density at 4.0 minutes;

D_m — Maximum Specific optical density at any time during the 20 minutes;

t_{D_m} — The time in minutes for the smoke to accumulate to the maximum specific optical density;

$D_m(\text{corr})$ — D_m corrected for incidental deposits on the optical surface

STATEMENTS:

The test results relate to the behaviour of the test specimens of a product under the particular conditions of the test. They are not intended to be the sole criterion for assessing the potential fire hazard of the product in use. The test results relate only to the specimens of the product in the form in which were tested. Small differences in the composition or thickness of the product may significantly affect the performance during the test and may therefore invalidate the test results. Care should be taken to ensure that any product, which is supplied or used, is fully represented by the specimens, which were tested.

To be continued...



Unless otherwise agreed in writing, this document is issued by the Company subject to its General Conditions of Service printed overleaf, available on request or accessible at <http://www.sgs.com/en/Terms-and-Conditions.aspx> and, for electronic format documents, subject to Terms and Conditions for Electronic Documents at <http://www.sgs.com/en/Terms-and-Conditions/Terms-e-Documents.aspx>. Attention is drawn to the limitation of liability, indemnification and jurisdiction issues defined therein. Any holder of this document is advised that information contained hereon reflects the Company's findings at the time of its intervention only and within the limits of Client's instructions, if any. The Company's sole responsibility is to its Client and this document does not exonerate parties to a transaction from exercising all their rights and obligations under the transaction documents. This document cannot be reproduced except in full, without prior written approval of the Company. Any unauthorized alteration, forgery or falsification of the content or appearance of this document is unlawful and offenders may be prosecuted to the fullest extent of the law. Unless otherwise stated the results shown in this test report refer only to the sample(s) tested and such sample(s) are retained for 30 days only.

Attention: To check the authenticity of testing / inspection report & certificate, please contact us at telephone: (86-755) 8307 1443, or email: CN.Doccheck@sgs.com
 No. 301, Sunlight Road, 2 Block, Sunlight Industry Zone, Anji County, Zhejiang Province, China 313300 t (86-572) 5018825 f (86-572) 5018829 www.sgs.com.cn
 中国·浙江·安吉县阳光工业园二区阳光大道301号 邮编: 313300 t (86-572) 5018825 f (86-572) 5018829 e sgs.china@sgs.com



Test Report

Date : 2020-10-12
No. : ST20090229

Page 2 of 4

Test Results:

EN 13501-1:2007+A1:2009 Fire classification of construction products and building elements - Part 1: Classification using data from reaction to fire tests

1. EN ISO 11925-2:2010

Test Results

Test Method	Parameter	Specimens number	Results
EN ISO 11925-2:2010 Surface exposure 15s flame application	$F_s \leq 150\text{mm}$	6	Yes
	Ignition filter paper		No
EN ISO 11925-2:2010 Edge exposure 15s flame application	$F_s \leq 150\text{mm}$	6	Yes
	Ignition filter paper		No

2. EN ISO 9239-1:2010 Determination of the burning behaviour using a radiant heat source

Test Results

Test Method	Parameter	Specimens number	Results
EN ISO 9239-1:2010	Critical flux (kW/m^2)	4	8.2

Classification

This classification has been carried out in accordance with EN 13501-1:2007+A1:2009.

Conclusion

According to the test results, the submitted sample (complied) the requirements of EN 13501-1:2007+A1:2009, class B_n

Remark: The classes with their corresponding fire performance are given in Table 2.

Note: When a statement of conformity to a specification or standard is provided, the ILAC-G8 Guidance document (and/or IEC Guide 115 in the electrotechnical sector) will be adopted as a decision rule for the determination of conformity unless it is inherent in the requested specification or standard, or otherwise specified in the Report.

STC (Shanghai) Company Limited

130 Huashen Road, Waigaoqiao Pilot Free Trade Zone, Shanghai, China. Zip Code: 200131
Tel: +86 21 5219 8248 Fax: +86 21 5219 8249 Email: shstc@stc-group.org Website: www.stc-group.org

This report shall not be reproduced unless with prior written approval from STC (Shanghai) Company Limited.
For Conditions of Issuance of this test report, please refer to the overleaf or website.



Table 2 — Classes of reaction to fire performance for floorings

Class	Test method(s)	Classification criteria	Additional classification
A1 _n	EN ISO 1182 ^a and	Temperature rise $\Delta T \leq 30$ °C; and Mass loss $\Delta m \leq 50$ %; and Duration of sustained flaming $t_f = 0$	-
	EN ISO 1716	Gross calorific potential PCS ≤ 2.0 MJ/kg ^a and Gross calorific potential PCS ≤ 2.0 MJ/kg ^b and Gross calorific potential PCS ≤ 1.4 MJ/m ² ^c and Gross calorific potential PCS ≤ 2.0 MJ/kg ^d	-
A2 _n	EN ISO 1182 ^a or	Temperature rise $\Delta T \leq 50$ °C; and Mass loss $\Delta m \leq 50$ %; and Duration of sustained flaming $t_f \leq 20$ s	-
	EN ISO 1716 and	Gross calorific potential PCS ≤ 3.0 MJ/kg ^a and Gross calorific potential PCS ≤ 4.0 MJ/m ² ^b and Gross calorific potential PCS ≤ 4.0 MJ/m ² ^c and Gross calorific potential PCS ≤ 3.0 MJ/kg ^d	-
	EN 9239-1 ^e	Critical flux $q \geq 8.0$ kW/m ²	Smoke production ^g
B _n	EN 9239-1 ^e and	Critical flux $q \geq 8.0$ kW/m ²	Smoke production ^g
	EN ISO 11925-2 Exposure = 15s	Flame spread $F_s \leq 150$ mm within 20 s	-
C _n	EN 9239-1 ^e and	Critical flux $q \geq 4.5$ kW/m ²	Smoke production ^g
	EN ISO 11925-2 Exposure = 15s	Flame spread $F_s \leq 150$ mm within 20 s	-
D _n	EN 9239-1 ^e and	Critical flux $q \geq 3.0$ kW/m ²	Smoke production ^g
	EN ISO 11925-2 Exposure = 15s	Flame spread $F_s \leq 150$ mm within 20s	-
E _n	EN ISO 11925-2 Exposure = 15s	Flame spread $F_s \leq 150$ mm within 20s	-
F _n	No performance determined		

Note: When a statement of conformity to a specification or standard is provided, the ILAC-G8 Guidance document (and/or IEC Guide 115 in the electrotechnical sector) will be adopted as a decision rule for the determination of conformity unless it is inherent in the requested specification or standard, or otherwise specified in the Report.

STC (Shanghai) Company Limited

130 Huashen Road, Waigaoqiao Pilot Free Trade Zone, Shanghai, China. Zip Code: 200131
Tel: +86 21 5219 8248 Fax: +86 21 5219 8249 Email: shstc@stc-group.org Website: www.stc-group.org

This report shall not be reproduced unless with prior written approval from STC (Shanghai) Company Limited.
For Conditions of Issuance of this test report, please refer to the overleaf or website.

测
试
专
用

Test Result

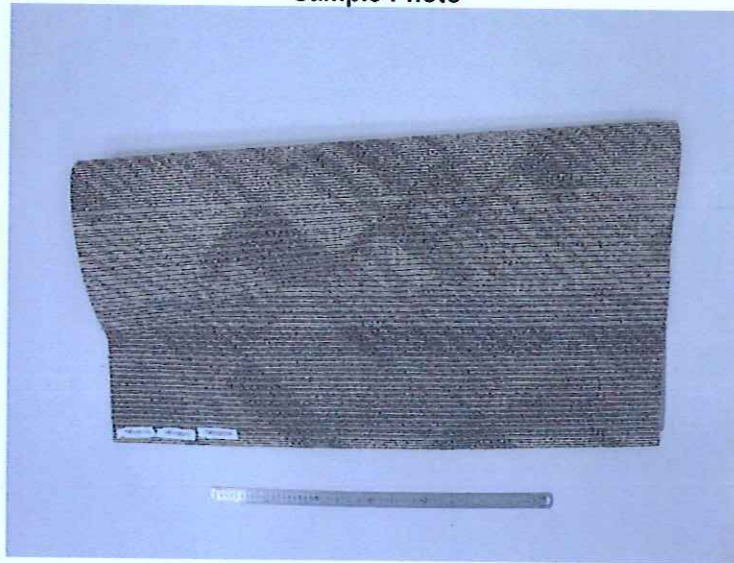
Color Fastness To Crocking

(AATCC TM 165-2013;)

	Unit	A
Dry Staining	-	4.5
Wet Staining	-	4.5

Remark: Grey Scale Rating is based on the 5-step scale of 1 to 5, where 1 is worst and 5 is best

Sample Photo



End of Report



Unless otherwise agreed in writing, this document is issued by the Company subject to its General Conditions of Service printed overleaf, available on request or accessible at <http://www.sgs.com/en/Terms-and-Conditions.aspx> and, for electronic format documents, subject to Terms and Conditions for Electronic Documents at <http://www.sgs.com/en/Terms-and-Conditions/Terms-e-Documents.aspx>. Attention is drawn to the limitation of liability, indemnification and jurisdiction issues defined therein. Any holder of this document is advised that information contained hereon reflects the Company's findings at the time of its intervention only and within the limits of Client's instructions, if any. The Company's sole responsibility is to its Client and this document does not exonerate parties to a transaction from exercising all their rights and obligations under the transaction documents. This document cannot be reproduced except in full, without prior written approval of the Company. Any unauthorized alteration, forgery or falsification of the content or appearance of this document is unlawful and offenders may be prosecuted to the fullest extent of the law. Unless otherwise stated the results shown in this test report refer only to the sample(s) tested and such sample(s) are retained for 30 days only. Attention: To check the authenticity of testing/inspection report & certificate, please contact us at telephone: (86-755) 8307 1443, or email: CN.Doccheck@sgs.com

SGS-CS (Shanghai) Technical Services (Shanghai) Co., Ltd.
Testing Center

3rd Building No. 889, Yishan Road, Xuhui District Shanghai, China 200233
中国·上海·徐汇区宜山路889号3号楼 邮编: 200233

t (86-21) 61402668 f (86-21) 64958763
t (86-21) 61402666 f (86-21) 64958763

www.sgs.com
sgs.china@sgs.com

Test Result

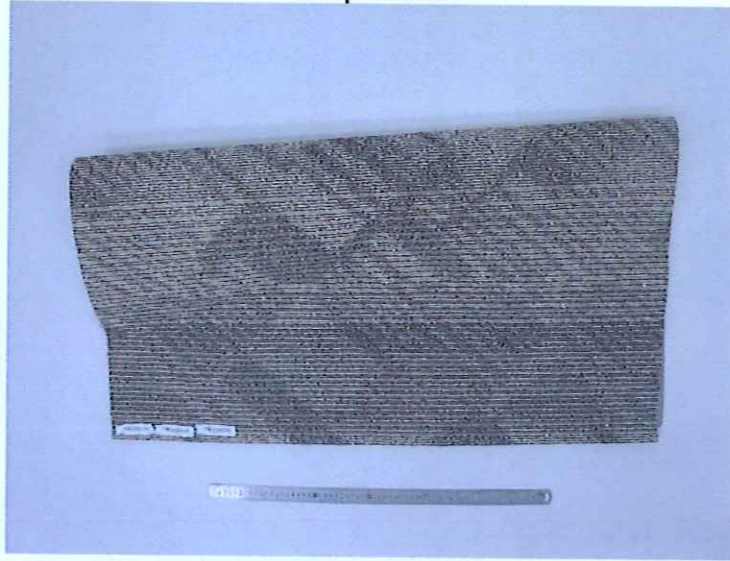
Tuft Bind of Pile Yarn Floor Coverings

(ASTM D1335-17E1;)

A

	No. 1	No. 2	No. 3	No. 4	No. 5
Tuft Bind(lbf)	8.8	8.6	8.8	9.6	7.9

Sample Photo



End of Report



Unless otherwise agreed in writing, this document is issued by the Company subject to its General Conditions of Service printed overleaf, available on request or accessible at <http://www.sgs.com/en/Terms-and-Conditions.aspx> and, for electronic format documents, subject to Terms and Conditions for Electronic Documents at <http://www.sgs.com/en/Terms-and-Conditions/Terms-e-Documents.aspx>. Attention is drawn to the limitation of liability, indemnification and jurisdiction issues defined therein. Any holder of this document is advised that information contained hereon reflects the Company's findings at the time of its intervention only and within the limits of Client's instructions, if any. The Company's sole responsibility is to its Client and this document does not exonerate parties to a transaction from exercising all their rights and obligations under the transaction documents. This document cannot be reproduced except in full, without prior written approval of the Company. Any unauthorized alteration, forgery or falsification of the content or appearance of this document is unlawful and offenders may be prosecuted to the fullest extent of the law. Unless otherwise stated the results shown in this test report refer only to the sample(s) tested and such sample(s) are retained for 30 days only. Attention: To check the authenticity of testing/inspection report & certificate, please contact us at telephone: (86-755) 8307 1443, or email: CN.Doccheck@sgs.com

SGS (China) Technical Services (Shanghai) Co., Ltd.
Testing Center

3rd Building, No. 889, Yishan Road, Xuhui District, Shanghai, China 200233
中国·上海·徐汇区宜山路889号3号楼 邮编: 200233

t (86-21) 61402666 f (86-21) 64958763
t (86-21) 61402666 f (86-21) 64958763

www.sgs.com
sgs.china@sgs.com

GREEN LABEL PLUS

INDOOR AIR QUALITY TESTING PROGRAM
THIS CERTIFIES THAT

Address: No.12-1,Jintong road,Tongan Town, High-Tech development Zone,
Suzhou City, Jiangsu China

HAS MET THE REQUIREMENTS OF
THE CARPET AND RUG INSTITUTE'S GREEN
LABEL PLUS PROGRAM FOR CATEGORY:

15X Pre-dyed Nylon with Bitumen Backing

Range of Total VOCs
0.5 mg/m³ or less

Product Type: Modular Tile

Joe W. Yarbrough, President
The Carpet and Rug Institute, Inc.

To view all GLP-Certified products visit www.carpet-rug.org/glp/products.

Certification Date: 02/28/2018
Expiration Date: 12/31/2021



THE CARPET AND RUG INSTITUTE
100 SOUTH HAMILTON STREET
DALTON GA 30720-4612 UNITED STATES



GLP100054

This product complies with
California DPH Section 01350
Version 1.2
Private Office Scenario.

A USGBC® recognized third
party certification program
for LEED v4 EQ Credit
Low-Emitting Materials.



ISO/IEC 17065
Product Certification Body
#0754



QUALITY MANAGEMENT SYSTEM CERTIFICATE

Certificate No.: 05507Q10436R1M-1

We hereby certify that

TILE CARPET CO., LTD.

REGISTRATION ADDRESS: NO.4997, BAOAN ROAD, ANTING TOWN, JIADING DISTRICT, SHANGHAI, P.R. CHINA

PRODUCTION ADDRESS: NO.12, JINTONG ROAD, TONG'AN TOWN, SUZHOU HIGH-NEW INDUSTRIAL PARK, JIANGSU PROVINCE, P.R. CHINA

POST CODE: 201805

by reason of its

QUALITY MANAGEMENT SYSTEM

has been awarded this certificate for compliance with the standards

GB/T19001-2000 idt ISO9001: 2000

(The 7.3 is excluded)

This system is valid for the following area:

PRODUCTION OF "JUDONG" TILE CARPET (PVC TILE CARPET & MODIFIED BITUMEN TILE CARPET & CUSHION BACK TILE CARPET)

Date of Issue: August 28, 2008

Date of Expiry: December 31, 2008

Certification Body: China Environmental United (Beijing)

Certificate Carpet Co., Ltd.

Body Address: No.1, Yuhui Road, Chaoyang District, Beijing, China

Issued by:

陈益平

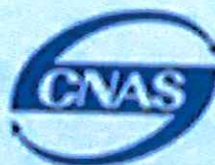
The expiry of this certification will be to one year later since the valid date issued and be re-valid just with the security feature of annual surveillance together.

The First Surveillance

The Second Surveillance

The Third Surveillance

Security Features of Annual Surveillance



Management System
CNAS C055-O





ISO14001 CERTIFICATE

Certificate No.: 05506E10205R1M

We hereby certify that

TILE CARPET CO., LTD.

REGISTERED ADDRESS: NO.4997, BAOAN ROAD, JIADING DISTRICT, SHANGHAI, P.R. CHINA
PRODUCTION ADDRESS: NO.12, JINTONG ROAD, TONGAN TOWN, NEW INDUSTRIAL PARK,
SUZHOU, P.R. CHINA

POST CODE: 201805

by reason of its
Environmental Management System
has been awarded this certificate for
compliance with the standards

GB/T24001:2004 idt ISO14001: 2004

The Environmental Management System applies in the following area:

THE RELEVANT SITES OF SHANGHAI JUDONG TILE CARPET CO., LTD., LOCATED AT NO.4997, BAOAN ROAD, JIADING DISTRICT, SHANGHAI/ NO.12, JINTONG ROAD, TONGAN TOWN, NEW INDUSTRIAL PARK, SUZHOU, P.R. CHINA, AND THE WHOLE PROCESS OF PRODUCTION OF PVC TILE CARPET AND MODIFIED MATERIAL TILE CARPET

Date of Issue: July 31, 2008

Date of Expiry: September 13, 2009

Certification Body: China Environmental United (Beijing)
Certification Center Co., Ltd.

Body Address: No.1, Yuhui South Road, Chaoyang District, Beijing, China

Issued by:

陈益平

The expiry of this certification will be to one year later since the valid date issued and be re-valid just with the security feature of annual surveillance together.

The First Surveillance

The Second Surveillance

The Third Surveillance

Security Features of Annual Surveillance



Management System
CNAS 0055-E